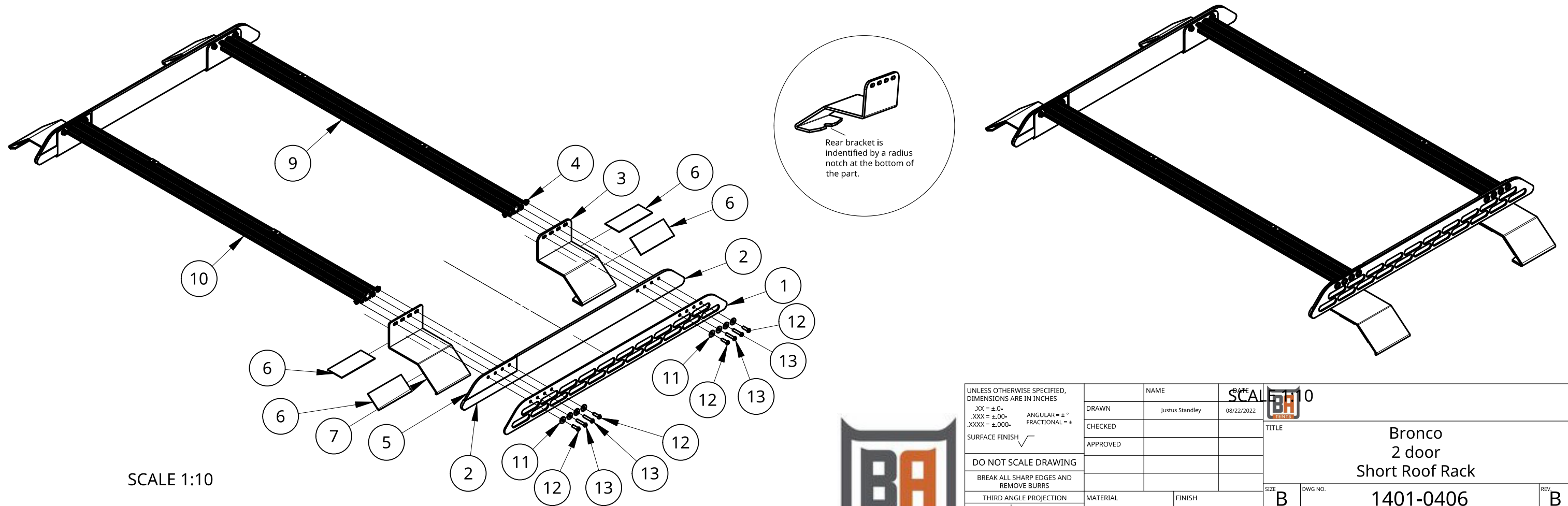


Revised 12/19/2023

Item	Quantity	Name	Part number	Description
1	2	Accessory panel	1401-0401.3	
2	2	1401.0401.4a Support	1401-0401.4	
3	2	Rear bracket	1401-0401.1	Rear mounting bracket
4	8	Serrated Flange Locknut	ABABA-.6CNWFS	Metric 18-8 Stainless Steel Serrated Flange Locknuts
5	2	Half rack cap	1401-0401.5	Rear support half rack filler
6	8	Rubber - Bronco bracket		Rubber sheet 0.063 x 2.0 x 4.5 in.
7	2	1401.0401.2B	1401.0401.2B	2 Door Bronco Half Rack, Front Mount
8	4	T-Nut	3382-T-NUT	1/4-20 10 S ECONOMY T-SLOT NUT, END FEED SINGLE (BLK)
9	1	Cross Bar 5		Aluminum extrusion 1x2 41.00"
10	1	Cross Bar 4		Aluminum extrusion 1x2 41.75"
11	16	Plastic Washer	90295A450	Nylon Plastic Washer for Number 12 Screw Size, 0.260" ID, 0.688" OD 0.070" thick Black
12	8	Socket button head screw M6x1 x 20	ABABA-.6C20KBCS	Socket button head screw M6x1 x 20 Stainless Steel
13	8	Socket button head screw M6x1 x 30	ABABA-.6C30KBCS	Socket button head screw M6x1 x 30 Stainless Steel



SCALE 1:10



UNLESS OTHERWISE SPECIFIED, DIMENSIONS ARE IN INCHES .XX = ±.0- .XXX = ±.00- .XXXX = ±.000-		NAME Justus Standley	DATE 08/22/2022	SCALE 1:8	REV 0
SURFACE FINISH ✓		CHECKED	APPROVED	TITLE Bronco 2 door Short Roof Rack	
DO NOT SCALE DRAWING BREAK ALL SHARP EDGES AND REMOVE BURRS		MATERIAL		FINISH	REV B
THIRD ANGLE PROJECTION 		SCALE 1:8		WEIGHT	SHEET 1 of 1